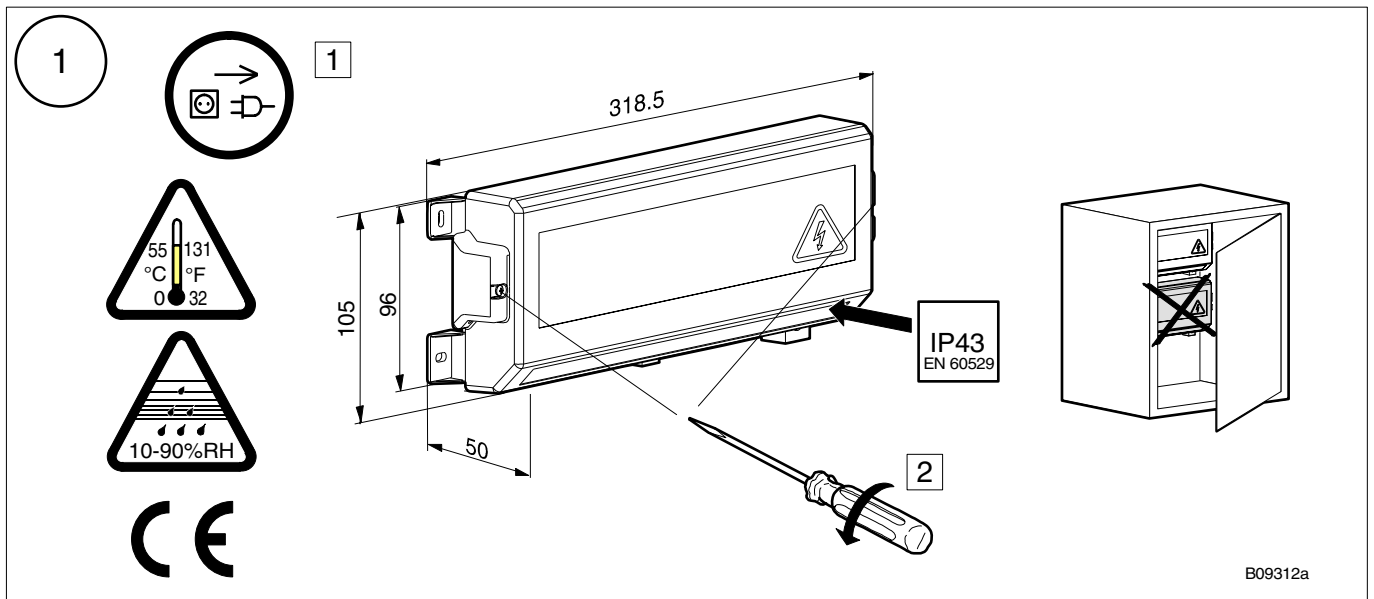


Anschlussmodul
Module de raccordement
Connector modul
Cassetta di distribuzione
Distribuidor eléctrico
Kopplingsbox
Elektrische Verdeler

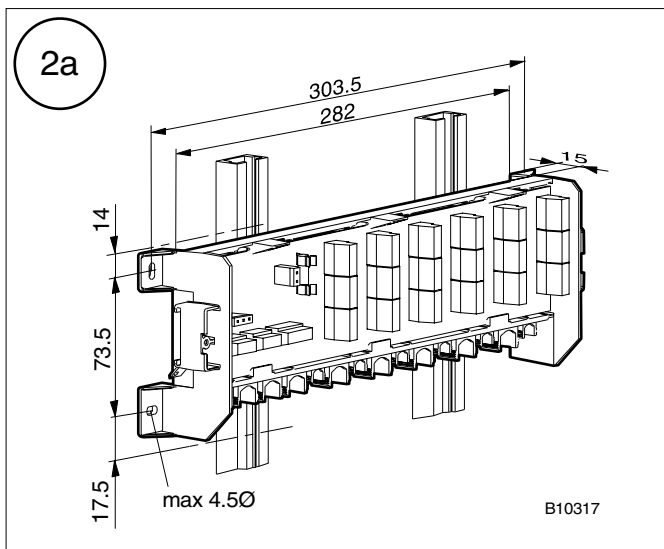
Montagevorschrift
Instructions de montage
Fitting instructions
Istruzioni di montaggio
Instrucciones de montaje
Monteringsanvisning
Montagevoorschrift

Installationsanweisung für die Elektrofachkraft
 Notice d'installation pour l'électricien
 Guidelines for the electrician
 Informazioni per l'installatore elettrico
 Instrucciones de instalación para el electricista
 Installationsinstruktion för behörig elektriker
 Instalatie aanwijzing voor de elektromonteur

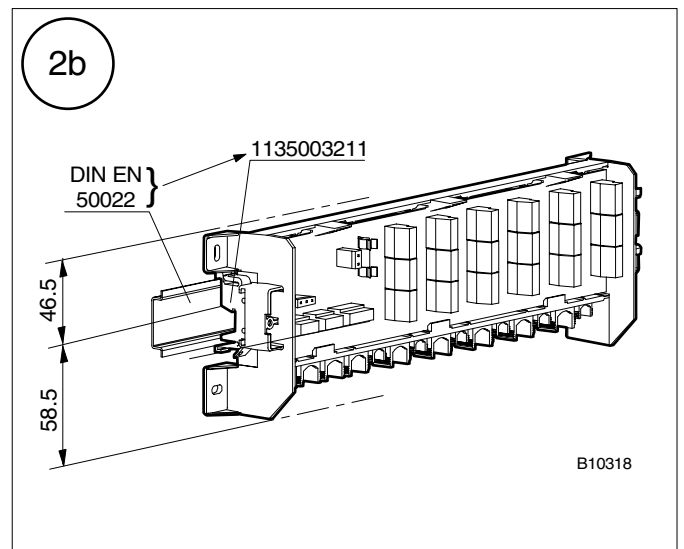
Verschmutzungsgrad 2, Stossspannungsfestigkeit 2000V, nach EN 60730
 Degré de pollution 2, Résistance aux surtensions 2000V, selon EN 60730
 Pollution degré 2; Resistance to voltage surges 2000V; as per EN 60730
 Grado di insudiciamento 2, Resistenza alla tensione a impulso 2000V, EN 60730
 Grado de suciedad 2, Resistencia de la tensión transitoria 2000V, según EN 60730
 Grad av nedsmutsningsgrad 2, Stötspanningsstyrka 2000V, enligt EN 60730
 Vervuilinggraad 2, Piekspanningsbestendigheid 2000V, volgens EN 60730



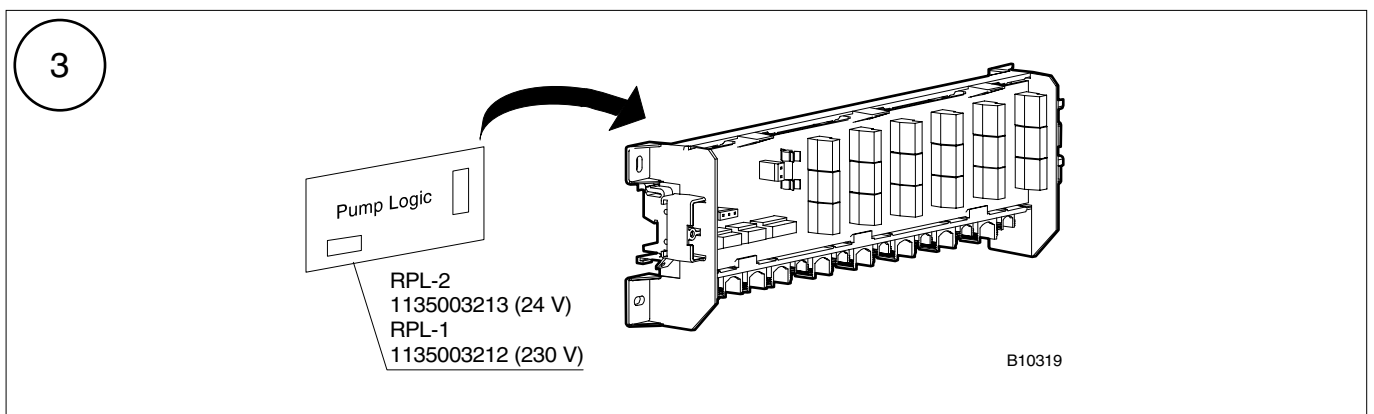
B09312a



B10317



B10318



B10319

Variants: Time program = A
Reduced Temp = B

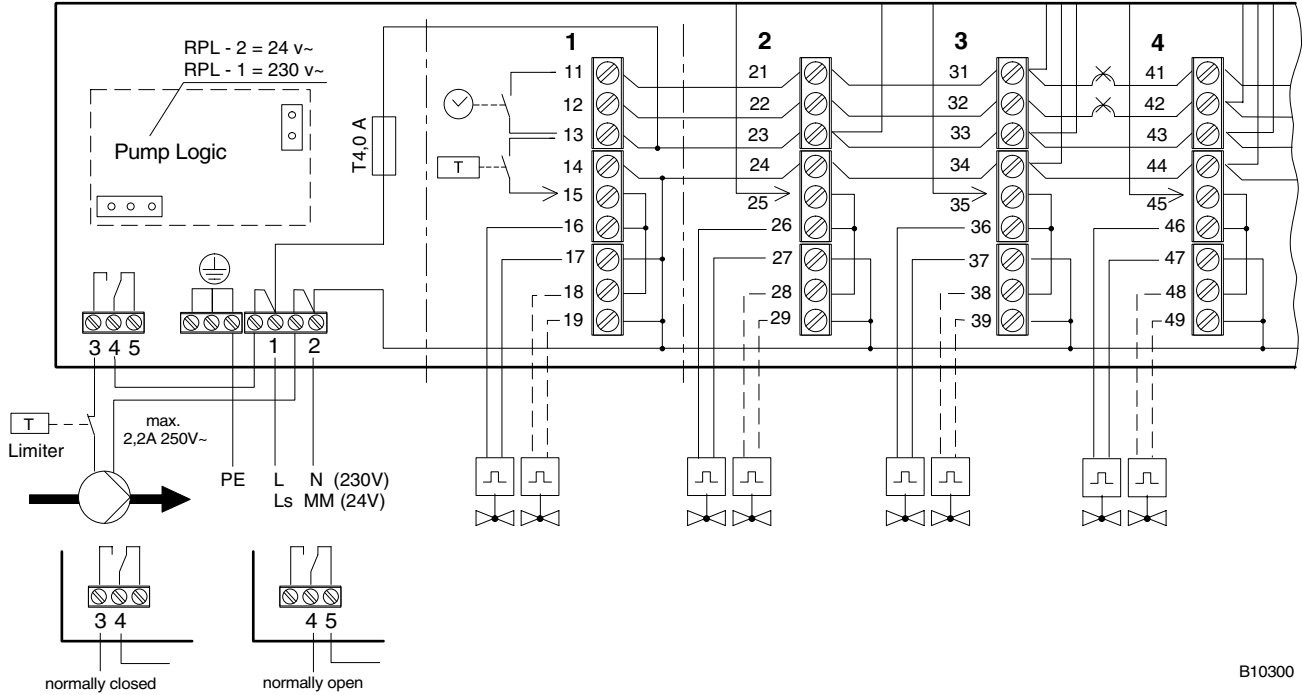
Time program 1 = A
Time program 2 = B

no time program

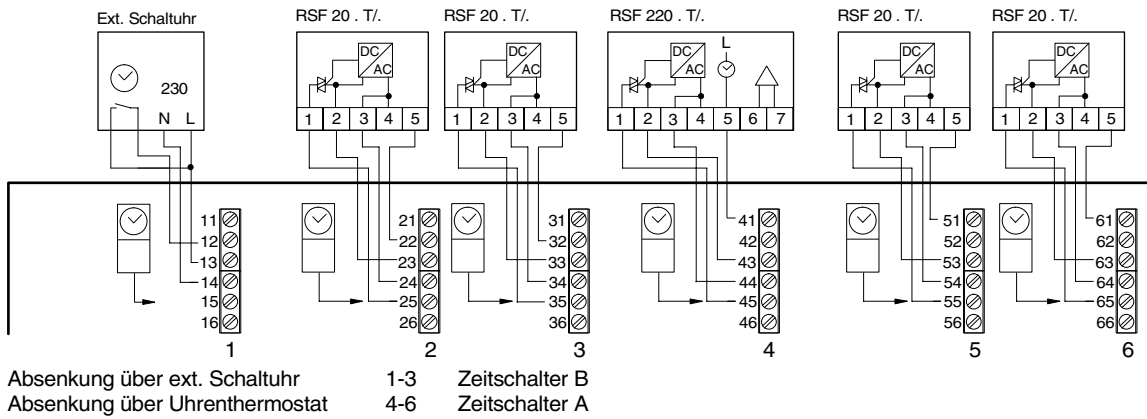
Normal / Reduced
(Time program A)

Normal / Reduced
(Time program B)

AM - 6

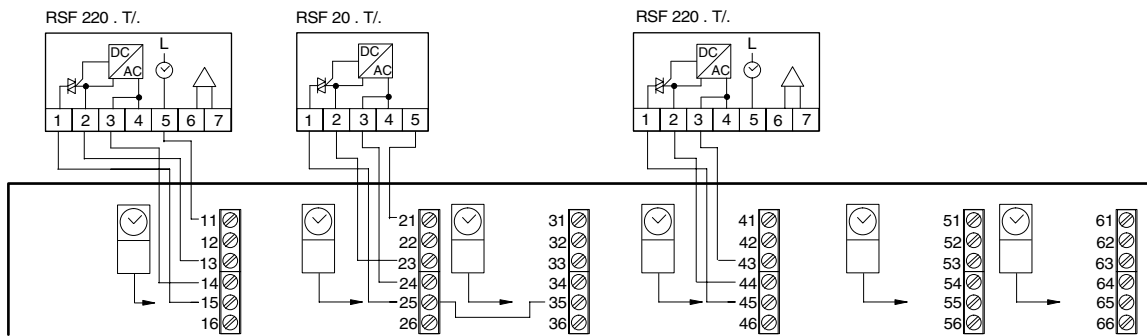


B10300



Absenkung über ext. Schaltuhr
Absenkung über Uhrenthermostat

1-3 Zeitschalter B
4-6 Zeitschalter A



Absenkung über Uhrenthermostat mit Weiterschaltung
von Kanal 2 auf Kanal 3 (per Drahtbrücke)

B10301